

Wi-Fi 5Ghz N300 Outdoor CPE

AirMax5X II

airlive®



Atheros
AR9344

5Ghz
N300

Central
Management
Supported

PTP/PTMP

AP/Repeater
Mode

LED Status
Display

2 x
WAN/LAN

Cloud/Controller
Control

PoE & DC
input

IP-65
WaterProof

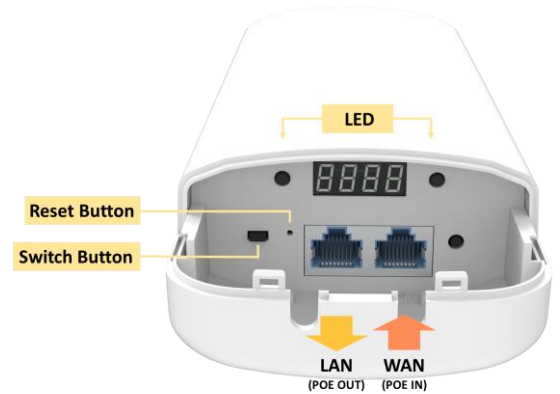
Overview

High Performance 5GHz Outdoor AP/Repeater CPE

AirMax5X II is a high performance 300Mbps Outdoor AP/Repeater/CPE built to the highest standard. It features dual polarity MIMO antenna to ensure optimal reception. 48V PoE passive PoE is featured to allow long cabling distance.

Professional Outdoor design+ Internal Lightning Protection, Suit for multiple harsh environment

Adopt outdoor ABS Plastic shell and professional lightning protection components, provide IP65 water-proof, dust-proof, suit for multiple harsh environment. even in extreme hot and cold environment(-30°C ~ +70°C), also can work stable.



Features

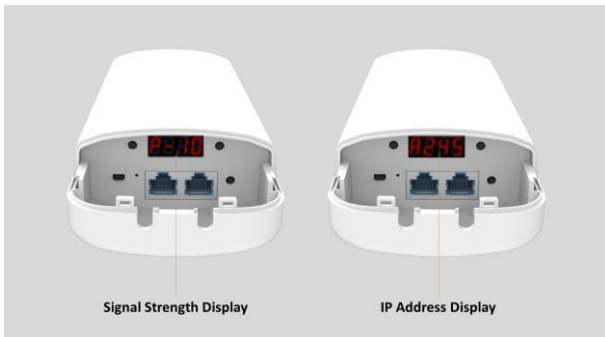
- 802.11 a/g/n/ compliant
- LED Status Display
- IP 65 Enclosure
- Built-in 14 dbi Antenna
- 1 x 10/100mbps WAN
- 1 x 10/100mbps LAN
- 48V PoE power input (WAN)

Simple to Configure

It with slide switch to change the operation mode; then with LED display to show and configure the IP address, channel, no need to access into GUI, avoid the complex setup program, simple to check the working status.

Support PoE Pass Through for IP Camera/CCTV

The device has integrated Power over Ethernet (PoE) for easy installation and lower cost. The WAN port support 802.3at 48V PoE in, make device can be installed in areas where power outlets are not readily available, eliminating the mess of altering existing network infrastructure; The LAN port support 802.3af 48V PoE out. Can work as a PoE switch, easy to provide PoE power for IP Camera/CCTV, saved much material cost and human cost.



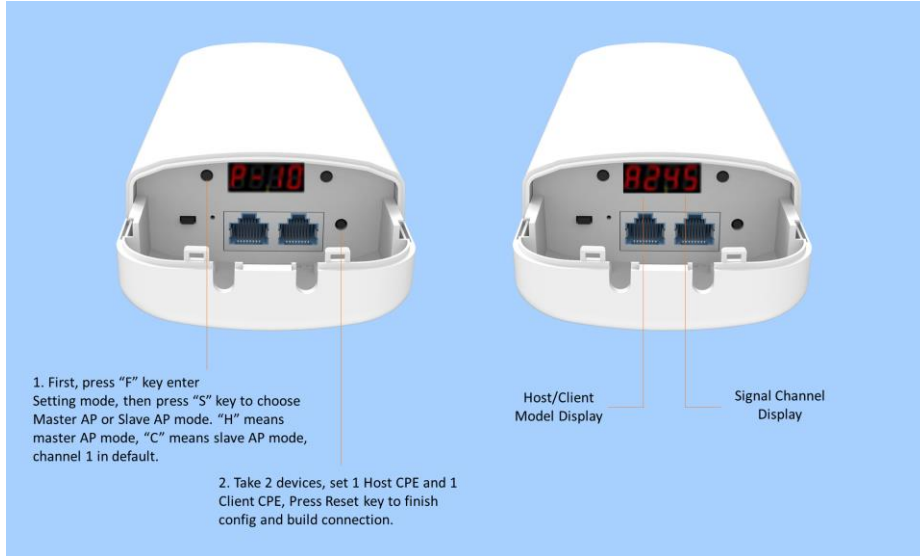
Wi-Fi 5Ghz N300 Outdoor CPE

AirMax5X II



Wireless Bridge(Host CPE/Client CPE/Signal Strength/IP address) LED Display

With Visible LED Display and signal strength automatic detection function for quickly build point to point and point to multi point wireless connection. easily installation and debugging. save installation cost.



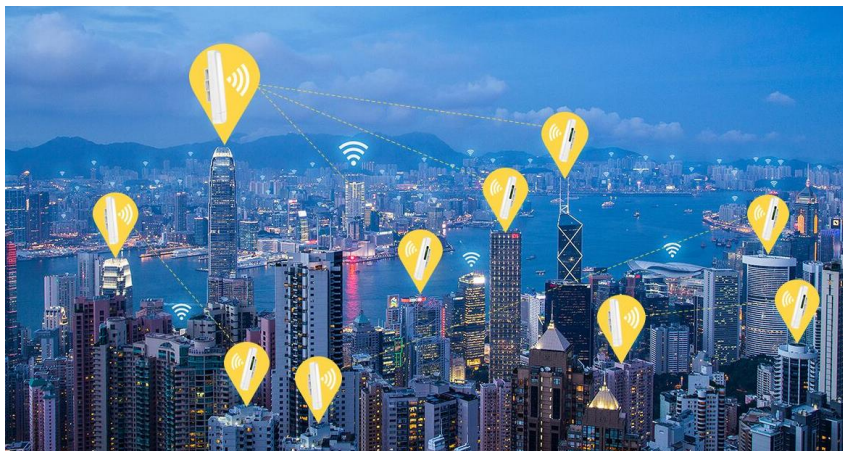
Advanced AP/Controller/ Repeater Operation Mode or, Cloud management

The AirLive AirMax5 II offers several different ways to control and operate

Controller mode: In this mode the Access Point (AirMax5 II) works with an AirLive WLAN Access Controller (WLAN-128GM), the controller is the "brain" of the AirMax5 II Access Point and controls all functions like wireless settings, encryption and more. This function also give the installer one type setting deploy.

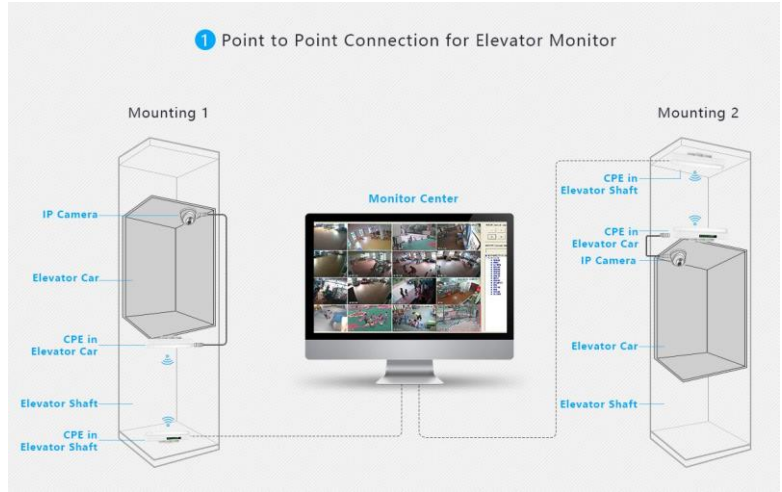
Cloud Control: The AirLive AirMax5 II can be controlled via the Cloud, ones the AP has been added to the Cloud. It can be controlled from any location. This offers extra benefits when dealing with a large network of Access Points, as direct access is not needed, and support can be giving from a remote office. Also, multiple levels of control can be giving in the Cloud from Admin to only viewer rights. AP's can be added and removed at anytime.

AP and Repeater mode: In this mode the AirMax5 II works as a AP or Repeater mode. Allow installer to setup the Point to point or point to multiple point wireless application.



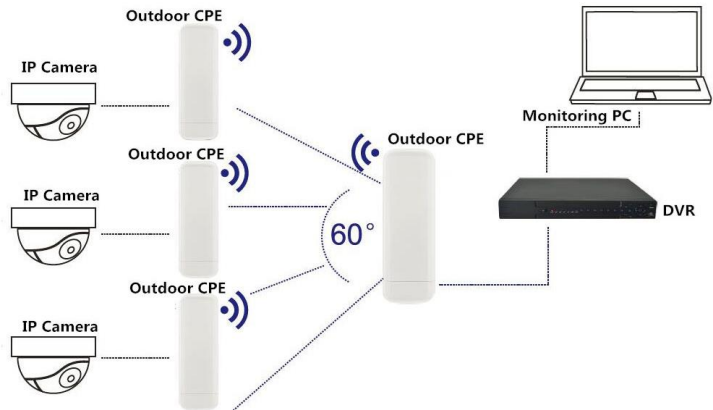
Multiple Application Environment

1. Elevator Monitor



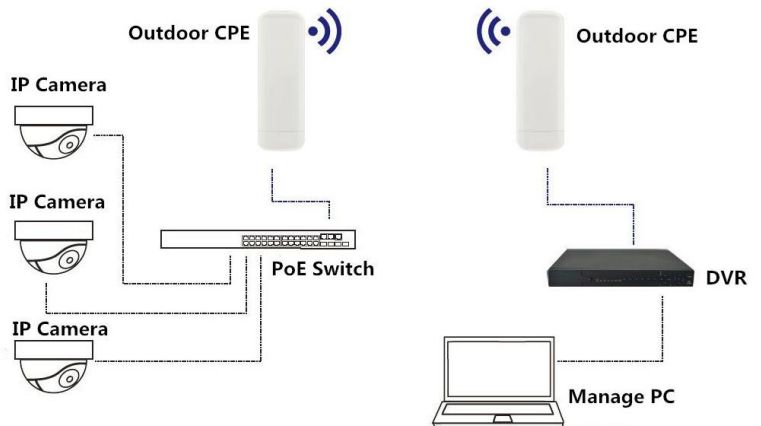
2. Point To Multiple Point connection application

PTMP Working Diagram of Outdoor CPE work with IP Camera



3. Point To Point connection application

PTP Working Diagram of Outdoor CPE work with Multiple IP Camera



| Model | AirMax5X II |
|---|--|
| <p>Device Interface</p> <ul style="list-style-type: none"> • Main Chip: AR9344 • Flash:16MB • RAM:64MB • Standard:IEEE802.3, IEEE 802.11n, IEEE 802.11a • Frequency:5.150GHz-5.825GHz • Channel:CH36 ~CH165 • Modulation: OFDM = BPSK, QPSK,16-QAM,64-QAM; DSSS = DBPSK, DQPSK, CCK • Data Rate:300Mbps • RF Output Power:≤ 26dBm • Antenna:14dBi Dual-polarized panel antenna • WAN:1 * 10/100Mbps RJ-45 WAN Port, support 802.3at 48V PoE in • LAN:1 * 10/100Mbps RJ-45 LAN Port, support 802.3af 48V PoE out • LED Display:1 * LED display with F(function) and S(select) buttons, show and set operation mode, channel, IP address, signal strength. • Slid Switch: Operation mode switch, H mean host, AP mode; C mean client, Repeater mode • Reset Button:1 * Reset Button, press 1 second, work with slid switch to change the operation mode; Press 10 seconds, the device will revert to factory default settings. • LED Light: Power, Wi-Fi, WAN, LAN • Power Consumption:< 15W • Water-proof Level:IP65 <p>Firmware Function</p> <p>Wireless</p> <ul style="list-style-type: none"> • SSID broadcast • Multiple SSID up to 4 • SSID hide • MAC filter: support while/black list • WiFi timed on/off • Multicast acceleration • User Isolation • VLAN pass through • Security: OPEN, WPA, WPA2, WPA-PSK, WPA2-PSK • Support RF power adjustable based on environment • End user access number limited to 64 | <p>Network Function</p> <ul style="list-style-type: none"> • VLAN setting • DHCP server • Cloud server <p>Device Management</p> <ul style="list-style-type: none"> • Backup the configuration information • Restore the configuration information • Reset to factory default settings • LAN PoE out disable/enable • Device reboot: reboot immediately or timed reboot • Firmware upgrade • Time management: including system time and time synchronization • System log • Support WEB GUI management • Support cloud remote management • Support soft AC management <p>Multiple Language</p> <ul style="list-style-type: none"> • English <p>ESD Protection</p> <ul style="list-style-type: none"> • Contact: ±6KV, Air: ±8KV <p>Environment</p> <ul style="list-style-type: none"> • Operating temperature : -30°C ~ +70°C • Storage Temperature : -40°C ~ +70°C • Storage Humidity : 5% ~ 95% (non-condensing) • Enclosure : IP65 <p>Standard package of switch</p> <ul style="list-style-type: none"> • Product size: 26.19*8.82*5.82 cm(L*W*H) • Package size: 33.2*10.6*9.5 cm(L*W*H) • Package content: TBD 1 x AirMax5X II, PoE Adapter, Install Accessory, LAN Cable, User Manual <p>Ordering information</p> <ul style="list-style-type: none"> • AirLive AirMax5X II Wi-Fi 5Ghz N300 Gigabit Outdoor CPE |

